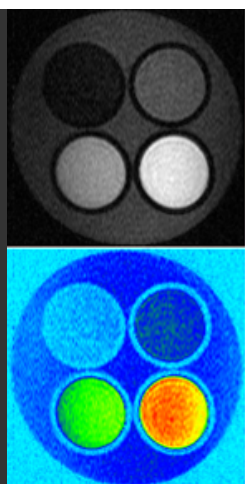
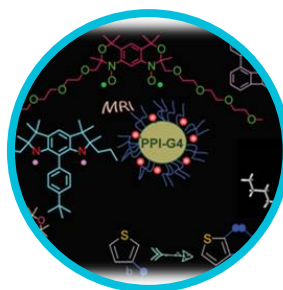


# NMI20 Contrast Agent MRI Analyzer

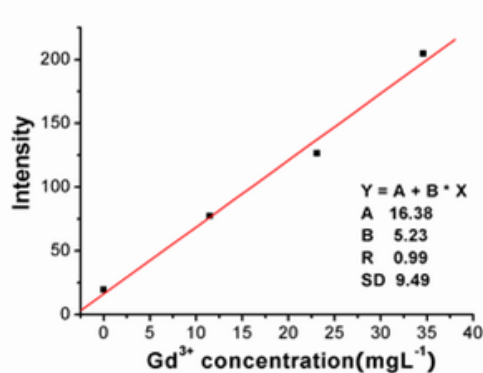


NMI20 is a classic Niumag instrument which has a wide range of applications in life sciences research. NMI20 integrates industrial design, analysis, and imaging in one easy to use instrument. Its performance and quality are generally recognized by domestic and foreign expert users. The system has received a number prestigious awards.

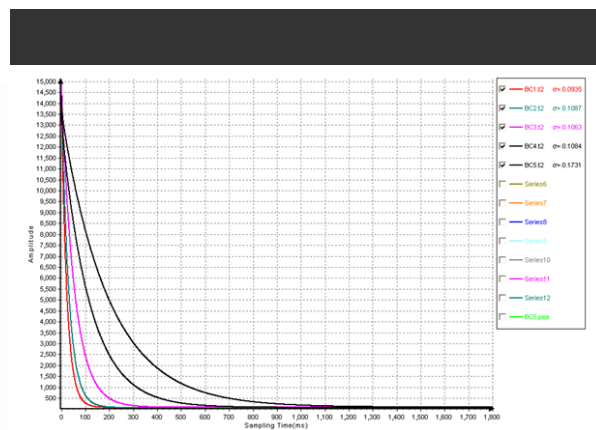
- Magnet type: permanent magnet;
- Magnetic field intensity:  $0.5 \pm 0.08T$ ;
- Probe coil:  $\varnothing 15mm$ ;



a



b



## CONTRAST AGENT MEASUREMENT

- Relaxation analysis of  $T2^*$ ,  $T2$  and  $T1$ ;
- Proton density imaging,  $T2$  weighted imaging,  $T1$  weighted imaging;

